



India Meteorological Department
(Ministry of Earth Sciences)

NATIONAL BULLETIN NO. 13 (Land/03/2025)

TIME OF ISSUE: 1400 HOURS IST

DATED: 19.07.2025

FROM: INDIA METEOROLOGICAL DEPARTMENT (FAX NO. 24643965/24699216/24623220)

TO: CONTROL ROOM, NDM, MINISTRY OF HOME AFFAIRS (FAX.NO. 23093750)

CONTROL ROOM NDMA (FAX.NO. 26701729)

CABINET SECRETARIAT (FAX.NO.23012284, 23018638)

PS TO HON'BLE MINISTER FOR S & T AND EARTH SCIENCES (FAX NO.23316745)

SECRETARY, MOES (FAX NO. 24629777)

H.Q. (INTEGRATED DEFENCE STAFF AND CDS) (FAX NO. 23005137/23005147)

DIRECTOR GENERAL, DOORDARSHAN (23385843)

DIRECTOR GENERAL, AIR (23421105, 23421219)

PIB MOES (FAX NO. 23389042)

UNI (FAX NO. 23355841)

D.G. NATIONAL DISASTER RESPONSE FORCE (NDRF) (FAX NO. 26105912, 2436 3260)

DIRECTOR, PUNCTUALITY, INDIAN RAILWAYS (FAX NO. 23388503)

CHIEF SECRETARY, GOVT. OF RAJASTHAN (FAX NO. 0141-2227114)

CHIEF SECRETARY, GOVT. OF DELHI (FAX NO. 011-23392101)

CHIEF SECRETARY, GOVT. OF GUJARAT (FAX NO. 079-23250305)

Subject: Depression over northwest Rajasthan

The Depression over northwest & adjoining areas of northeast Rajasthan moved nearly westwards with a speed of 15 kmph during past 6 hours and lay centred at 1130 hrs IST of today, the 19th July, 2025, over northwest Rajasthan, near latitude 27.5°N and longitude 74.2°E, 60 km northeast of Nagaur, 90 km west of Sikar, 100 km east-southeast of Bikaner and 190 km east-northeast of Phalodi.

It is likely to move nearly westwards across northwest Rajasthan and weaken gradually into a well-marked low-pressure area during next 12 hours.

Warnings:

(i) Rainfall Warning:

West Rajasthan: Light to moderate rainfall at most places with **heavy to very heavy rainfall** at a few places and **extremely heavy rainfall** isolated places over southwest Rajasthan on 19th July.

East Rajasthan: Light to moderate rainfall at most places with **heavy rainfall** at a few places over southeast Rajasthan on 19th July.

Saurashtra & Kutch: Light to moderate rainfall at most places with **heavy to very heavy rainfall** at isolated places over on 19th July.

Gujarat region: Light to moderate rainfall at most places with **heavy to very heavy rainfall** at isolated places over north Gujarat region and **heavy rainfall** at isolated places over south Gujarat region on 19th July.

(ii) Wind Warnings: Squally wind speed reaching 35-45 kmph gusting to 55 kmph over northwest & adjoining areas of northeast Rajasthan is likely to prevail during next 12 hours and decrease gradually thereafter.

(iii) Impact Expected and Action Suggested due to very heavy/extremely heavy rainfall and squally winds (Rajasthan and Gujarat)

Impact expected:

- ❖ Breaking of tree branches, uprooting of small trees like banana, papaya, drum sticks. Strong wind and rain may damage plantation, horticulture and standing crops.
- ❖ Partial damage to vulnerable structures due to strong winds and rain.
- ❖ Minor damage to kutchha houses/walls, huts and roads due to heavy rain.
- ❖ Loose objects may fly.
- ❖ Road and rail traffic may be affected due to heavy rain and squally winds.
- ❖ There could be localised landslides, mudslides, landslips, water logging, inundation and flooding over low lying areas.
- ❖ Occasional reduction in visibility due to heavy rainfall.
- ❖ Helicopter services may get affected.

Action suggested:

- ❖ People are advised to keep a watch on the weather for worsening conditions and be ready to move to safer places accordingly.
- ❖ Take safe shelters; do not take shelter under trees, as there could be lightning.
- ❖ In case of expected lightning, unplug electrical/ electronic appliances, immediately, get out of water bodies and keep away from all the objects that conduct electricity.
- ❖ Tourism and recreational activities to be regulated.
- ❖ Helicopter services to be regulated.

Significant rainfalls accumulated during past 24 hours recorded at 0830 hrs IST of today, the 19th July, 2025 are given in Annexure-I

Next bulletin will be issued at 2030 hrs IST of today, the 19th July, 2025.

(Ananda Kumar Das)
Scientist-F, IMD, New Delhi

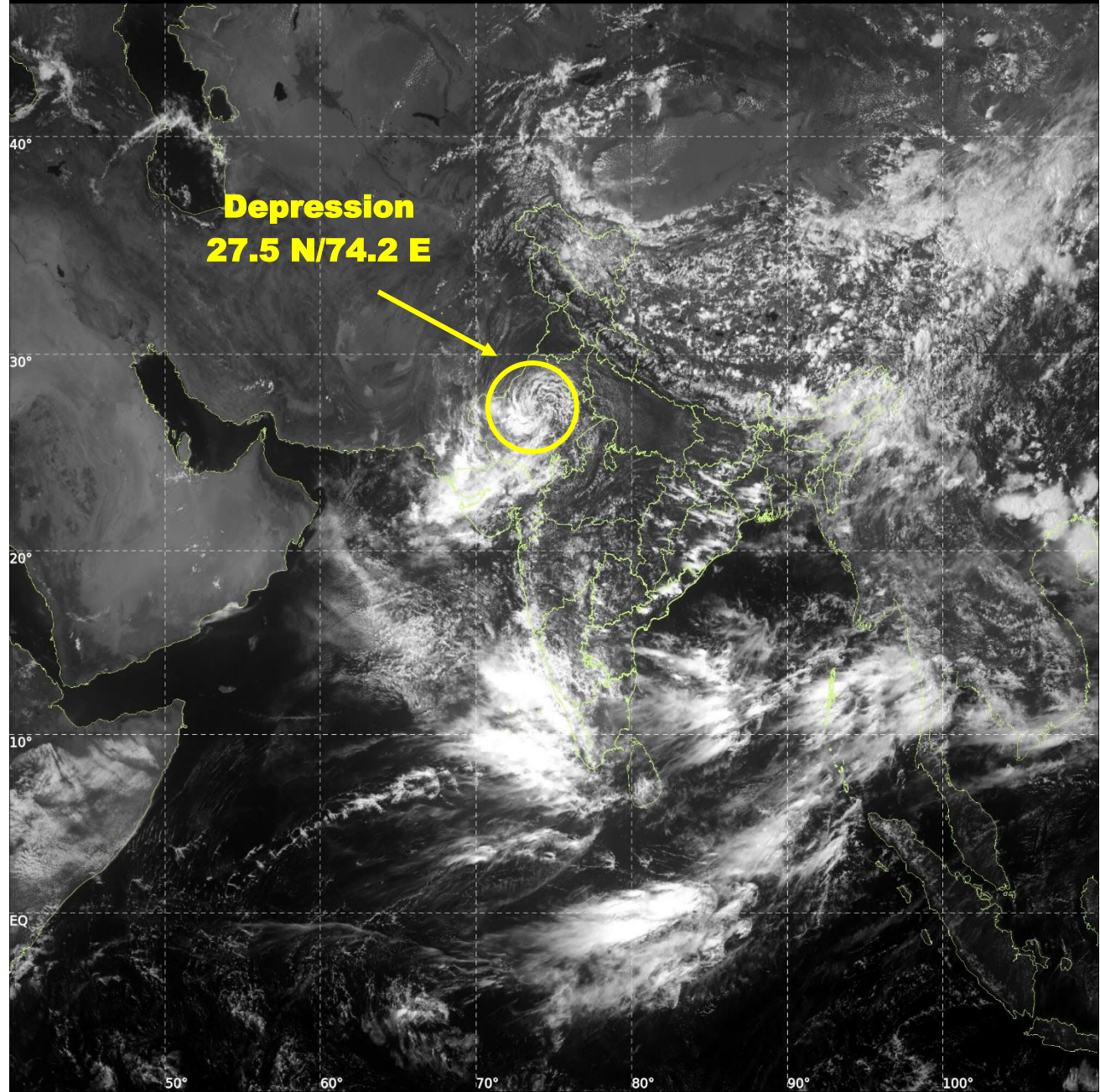
Copy to: Meteorological Centres- Bhopal, Jaipur, Delhi, Ahmedabad.



INSAT-3DS IMG, Visible Count @ 0.65 μm
GMT:19-07-2025/(0730-0757) IST:19-07-2025/(1300-1327)
L1C MERCATOR (LINEAR STRETCH: 0.5%)

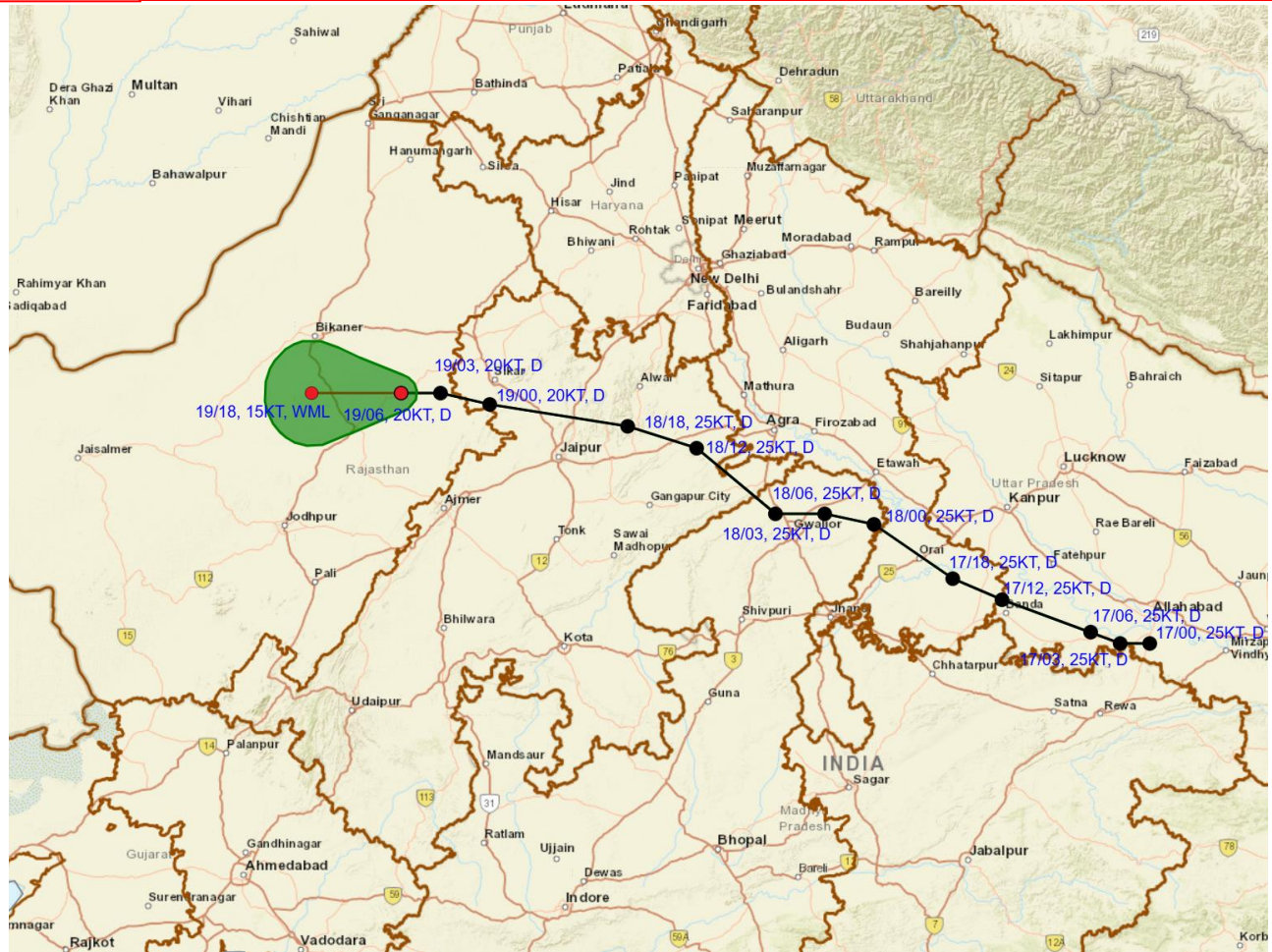
66

447





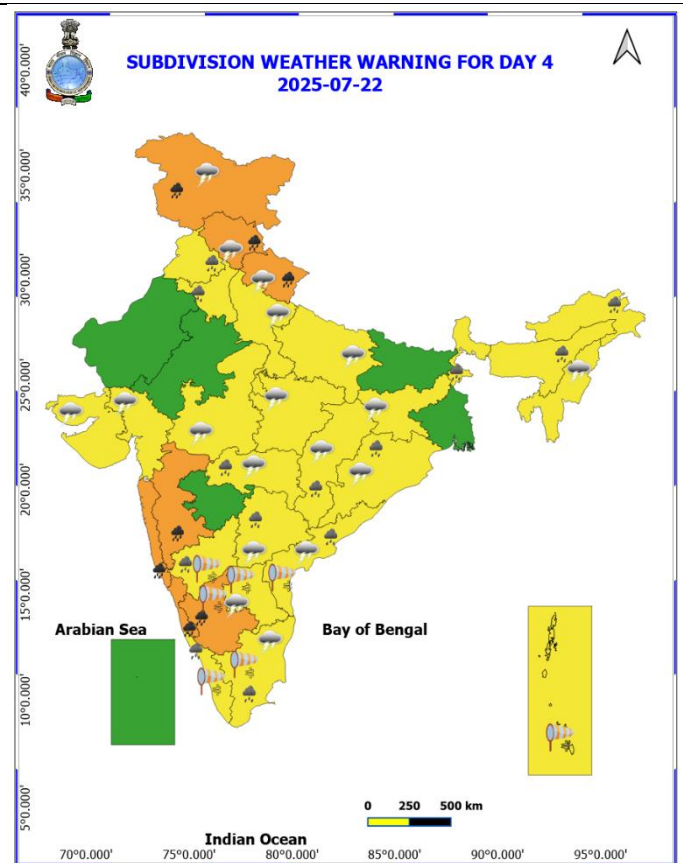
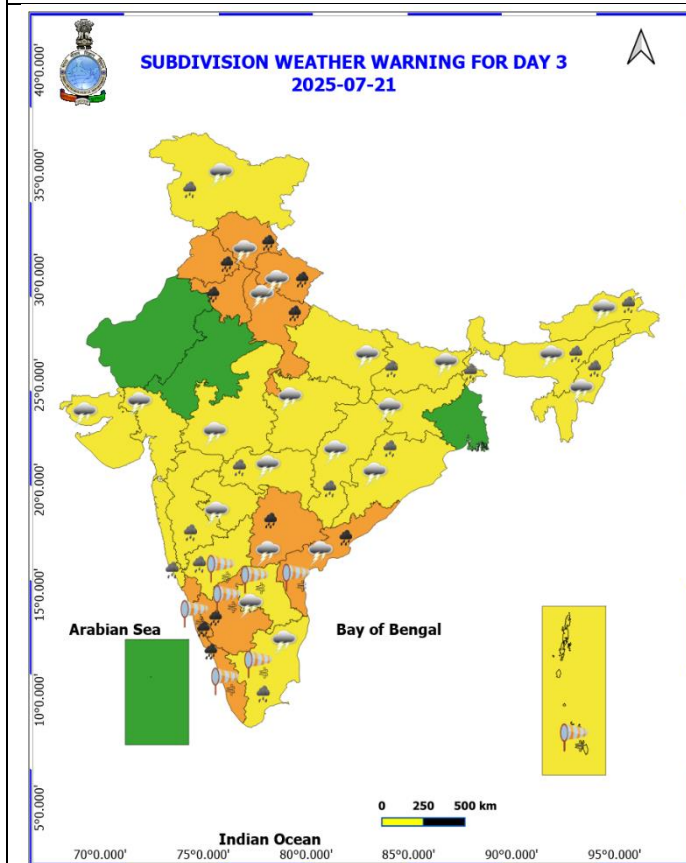
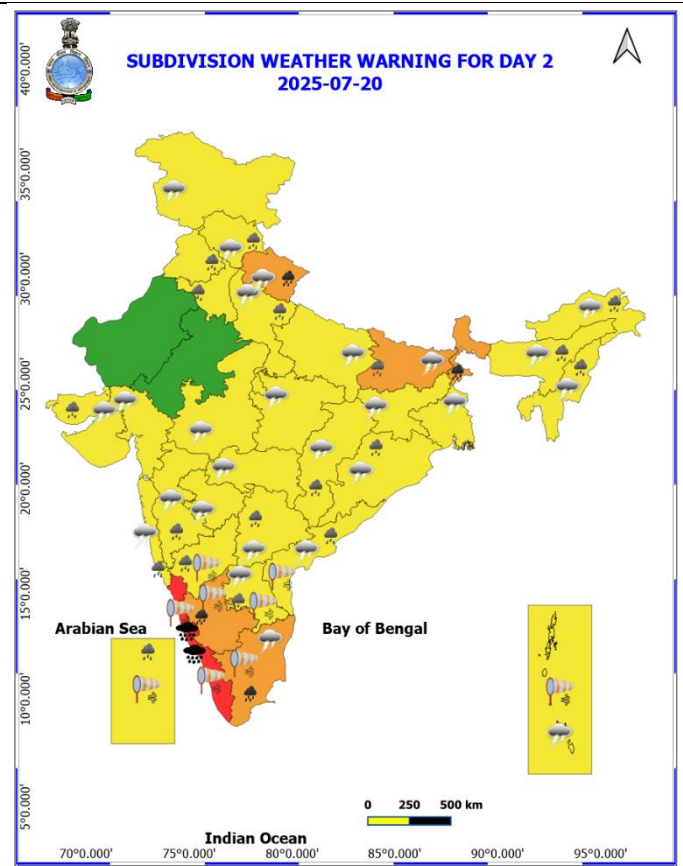
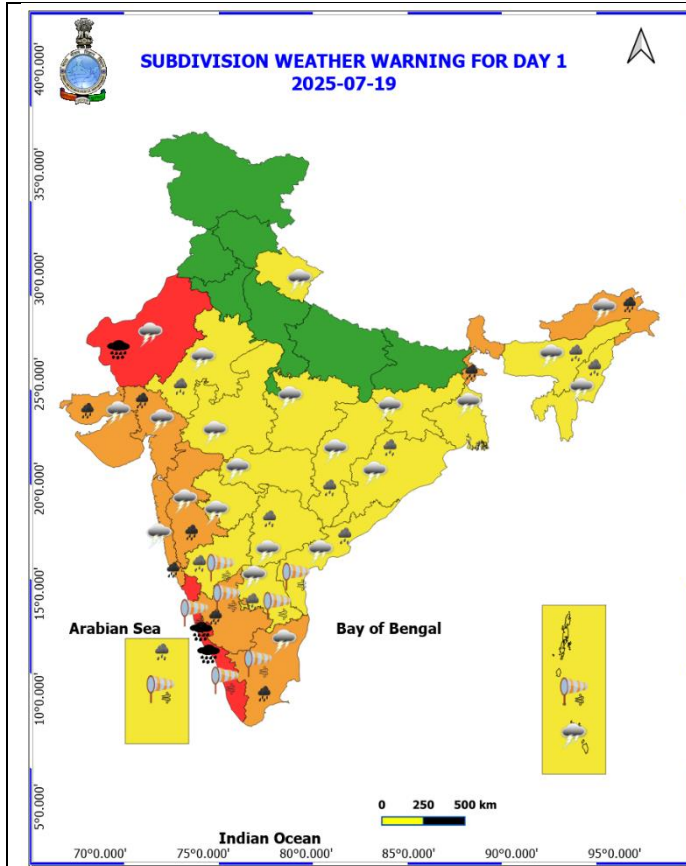
OBSERVED AND FORECAST TRACK ALONG WITH CONE OF UNCERTAINTY OF LAND DEPRESSION OVER NORTHWEST RAJASTHAN AT 1130 HRS. IST (0600 UTC) OF 19th JULY 2025

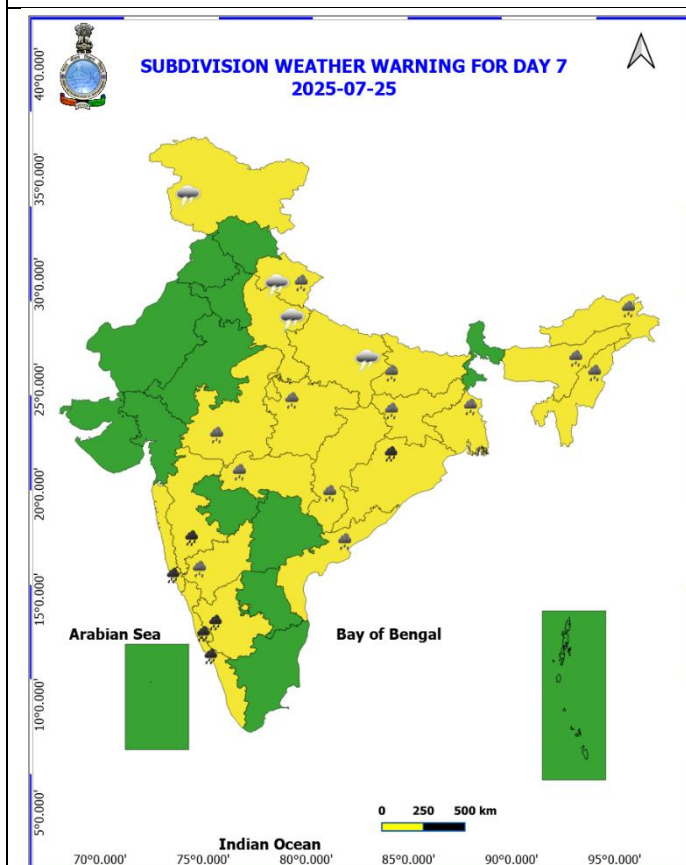
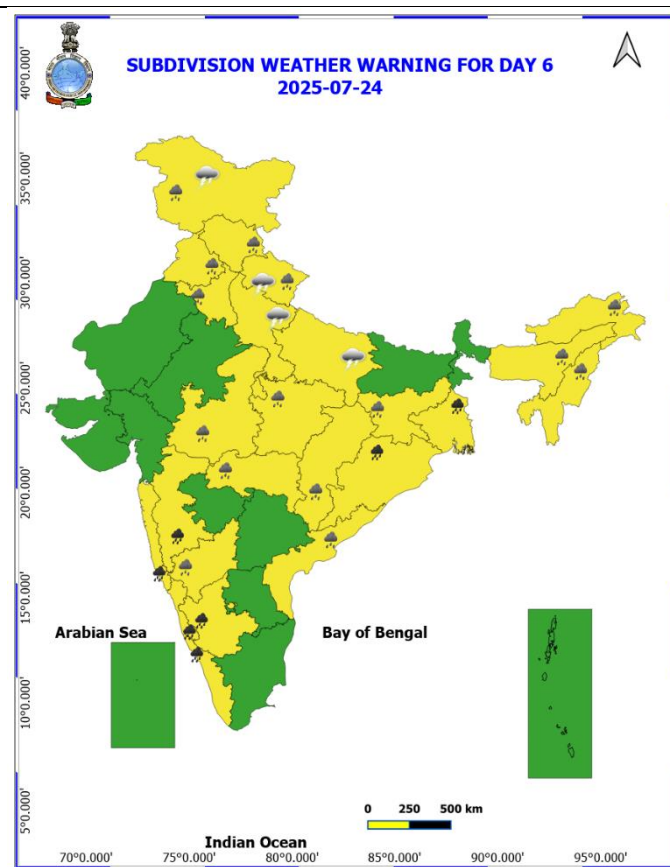
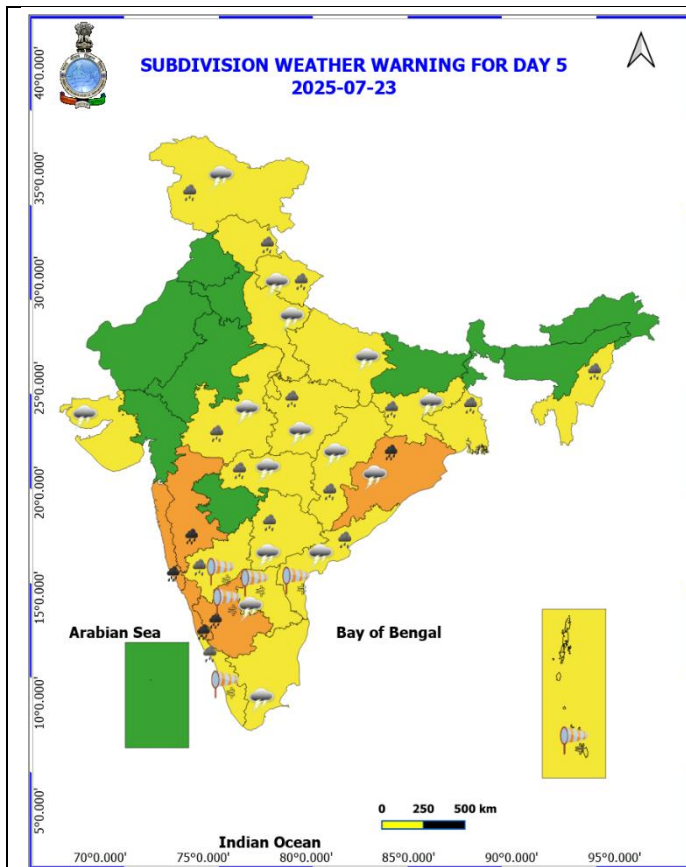


DATE/TIME IN UTC
IST=UTC + 0530
L: LOW PRESSURE AREA
WML: WELL MARKED LOW PRESSURE AREA
D: DEPRESSION (17-27 KT)
DD: DEEP DEPRESSION (28-33 KT)
CS: CYCLONIC STORM (34-47 KT)
SCS: SEVERE CYCLONIC STORM (48-63KT)
VSCS: VERY SEVERE CYCLONIC STORM (64-89 KT)
ESCS: EXTREMELY SEVERE CYCLONIC STORM (90-119 KT)
SuCS: SUPER CYCLONIC STORM (≥ 120 KT)

● LESS THAN 34 KT
○ 34-47 KT
○ ≥ 48 KT
— OBSERVED TRACK
— FORECAST TRACK
▲ CONE OF UNCERTAINTY

Weather Warning Graphics





COLOUR CODED WARNING

- No Warning (No Action)
- Watch (Be Aware)
- Alert (Be Prepared To Take Action)
- Warning (Take Action)

Probabilistic Forecast

Terms	Probability of Occurrence (%)
Unlikely	< 25
Likely	25 - 50
Very Likely	50 - 75
Most Likely	> 75

Weather Warnings Legend:

- Fog
- Heavy Rain
- Very Heavy Rain
- Extremely Heavy Rain
- Thunder & Lightning
- Hailstorm
- Dust Raising Winds
- Heavy Snow
- Dust Storm
- Heat Wave
- Warm Night
- Hot Day
- Hot & Humid
- Strong Surface Winds
- Cold Wave
- Cold Day
- Ground Frost

* Red colour warning does not mean "Red Alert", Red colour warning means "Take Action".
Forecast and Warning for any day is valid from 0030 hours IST of day till 0030 hours IST of next day.
For more details, kindly visit <https://mausam.india.gov.in> or contact: 011-24334-4599
(Service to the Nation since 1875)

Flash Flood Guidance

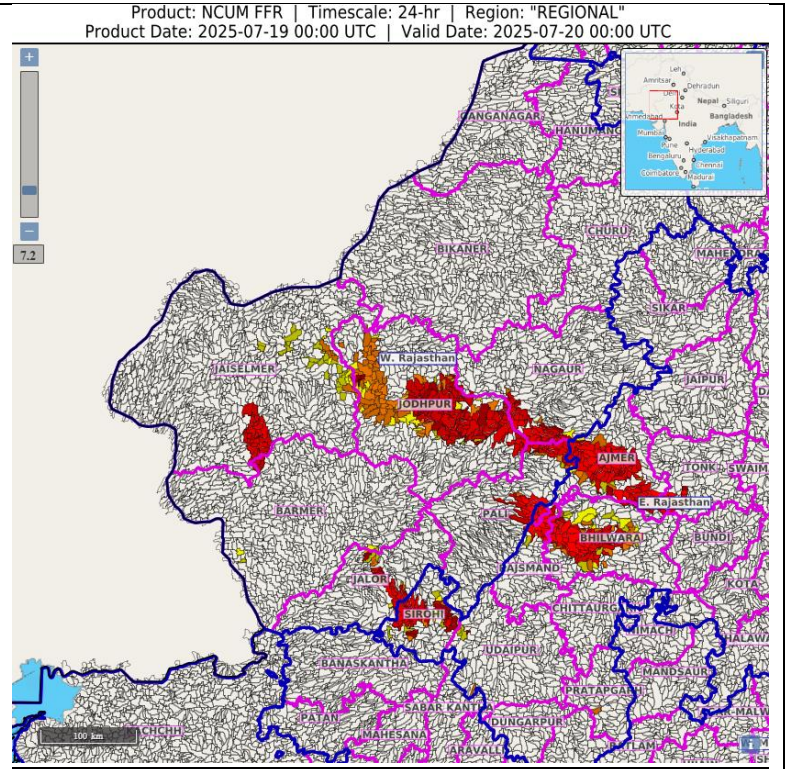
24 hours Outlook for the Flash Flood Risk (FFR) till 0530 IST of 20-07-2025 :

Low to Moderate flash flood risk likely over few watersheds & neighbourhoods of following Met Sub-divisions during next 24 hours.

East Rajasthan – Ajmer, Bhilwara, Sirohi and Tonk districts.

West Rajasthan – Jalor, Pali, Nagaur, Jodhpur and Jaislmer districts.

Surface runoff/ Inundation may occur at some fully saturated soils & low-lying areas over Area of Concern (AoC) as shown in map due to expected rainfall occurrence in next 24 hours.



Flash Flood Risk

High Risk (Take Action)

Moderate Risk (Be Prepared)

Low Risk (Be Updated)

Annexure -I

Significant rainfall recorded (in cm) from 0830 hours IST of yesterday to 0830 hours IST of today, the 19th July, 2025:

EAST RAJASTHAN: Nainwa (Bundi) 23, Mangliawas Sr (Ajmer) 19, Nasirabad (Ajmer) 18, Pratapgarh (Pratapgarh) 16, Pisagan Sr (Ajmer) 15, Ajmer (Ajmer) 14, Sarmathura Sr (Dholpur) 14, Kishangarh (Ajmer) 14, Pushkar Sr (Ajmer) 13, Sarwar (Ajmer) 13, Ajmer Tehsil Sr (Ajmer) 12, Deogarh (Rajsamand) 12, Nagarfort Sr (Tonk) 11, Indergarh Sr (Bundi) 11, Masuda Sr (Ajmer) 11, Geola Sr (Ajmer) 11, Bhinay Sr (Ajmer) 11, Kekri Sr (Ajmer) 11, Malerainadunger Sr (Sawai Madhopur) 10, Arai Sr (distn Ajmer) 10, Lalsot (Dausa) 10, Kumbhalgarh Sr (Rajsamand) 9, Pipalda Sr (Kota) 9, Tatgarh Sr (Ajmer) 9, Tonk Vanasthali (Tonk) 9, Gegal Sr (Ajmer) 9, Khandar Sr (Sawai Madhopur) 9, Bamanwas Sr (Sawai Madhopur) 9, Sawaimadhopur Tesil Sr (Sawai Madhopur) 8, Nayanagar/beawar (Ajmer) 8, Hurda Sr (Bhilwara) 8, Raipur (Bhilwara) 8, Jawaja (Ajmer) 8, Todaraisingh Sr (Tonk) 8, Dausa (Dausa) 8, Gangapur (Sawai Madhopur) 7, Mandana Sr (Kota) 7, Nimbahera (Chittorgarh) 7, Mandrayal Sr (Karauli) 7, Chothkabarwara Sr (Sawai Madhopur) 7, Piplu Sr (Tonk) 7, Vijaynagar Sr (Ajmer) 7, Sapotra (Karauli) 7, Jhadol Sr (Udaipur) 7, Bhim (Rajsamand) 7, Uniara / Aligarh (Tonk) 7, Sallopat Sr (Banswara) 7,

WEST RAJASTHAN: Merta City (Nagaur) 23, Raipur Sr (Pali) 14, Khivensar Sr (Nagaur) 13, Degana (Nagaur) 11, Bhopalgarh Sr (Jodhpur) 10, Bilara (Jodhpur) 9, Marwar Junction (Pali) 9, Sojat (Pali) 9, Luni Sr (Jodhpur) 9, Pali (Pali) 8, Pachpadra (Barmer) 7, Jaitran (Pali) 7, Rohat Sr (Pali) 7, Jodhpur Tehsil Sr (Jodhpur) 7, Shergarh (Jodhpur) 7,

GUJARAT REGION: Danta (Banaskantha) 13, Palanpur (Banaskantha) 9,

WEST MADHYA PRADESH: Bairad (Shivpuri) 11, Karhal (Sheopur) 10, Badoda (Sheopur) 9, Kumbhraj (Guna) 8, Narwar (Shivpuri) 8, Mandsaur-aws (Mandsaur) 7, Alipur(jaura) (Morena) 7, Veerpur (Sheopur) 7, Jawad (Neemuch) 7,